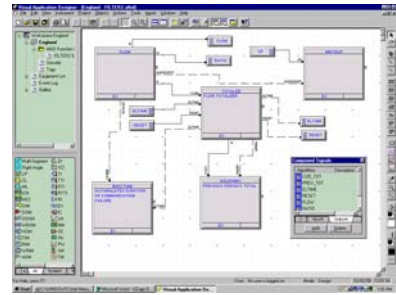


ViZapp Database Import Problem

Some connections are not created on import of Application Builder database



Problem Description:

Database imports without error, but compiling shows "no corresponding output terminal" for some sources and "connected to non-existent data" on their destinations. This problem appears to occur only with Direct-Connected Compounds, where there are multiple destinations from the compound output signal.

Applies to:

Visual Application Designer version – all versions

Solution:

1. Load the database into the Application Builder software.
2. Create and print a database report of Connections only, for reference.
3. In ViZapp, compile the imported database and view the error log. Note that the errors are reported in pairs. The first line of each pair indicates the source of the error. The second line indicates the destination of the signal.
4. Open the compound indicated in the first error.
5. Double-click on the first error in the information window.
6. Click Cancel to close the Algorithm Properties window.
7. Right-click on the highlighted compound and select Open Compound.
8. In the Compound Signals window, select the Outputs tab.
9. Click once on the name of the signal that was reported in the error message.
10. Move the cursor to a blank space near the block where the signal should come from.
11. Click once to place the terminal.
12. Click on Multi-Segment in the Algorithms window.
13. Click on the block for the signal source and double-click on the correct output signal.
14. Draw a line, connecting this signal to the new terminal.
15. Right-click and select Close Compound.
16. Repeat steps 3 through 15 for each pair of errors.

Technical Notice