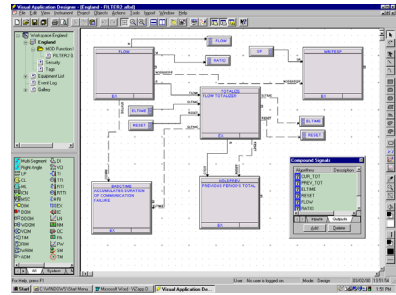


ViZapp Database Password Protection

Password Protect your Loop Compounds in ViZapp



Problem Description:

This technote explains how to protect the ViZapp database with passwords.

Applies to:

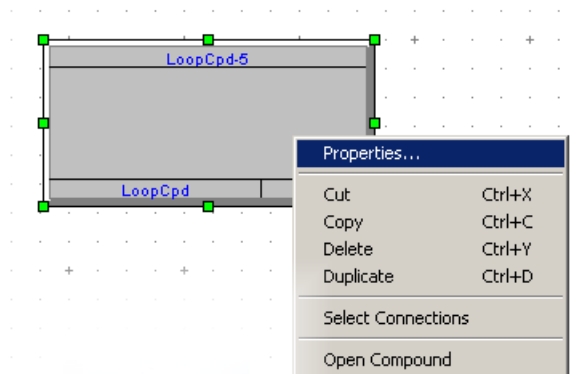
Visual Application Designer version – all versions.

Instructions:

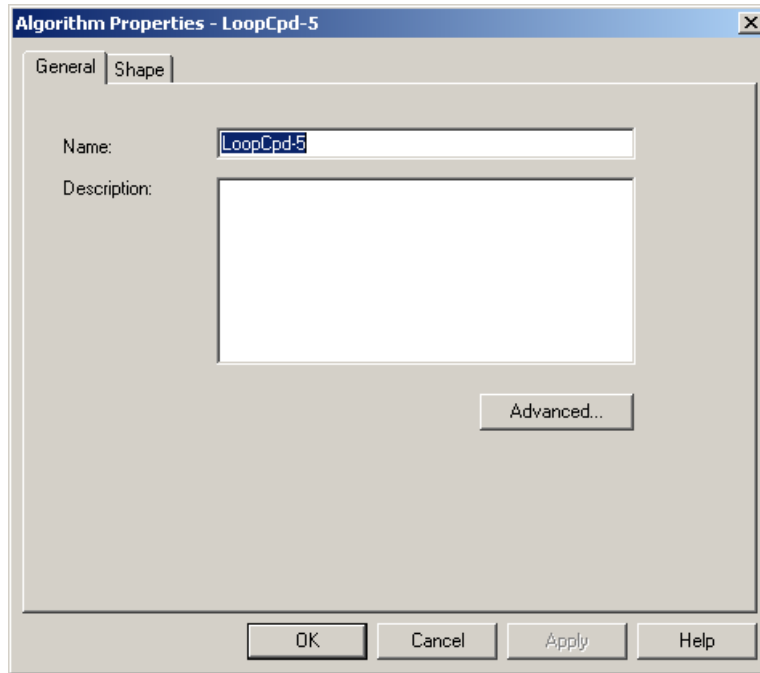
The Vizapp instrument database typically contains loop compounds inside which the control strategy is configured. Vizapp allows a password to be configured for each of the loop compounds in the database.

To set a Password:

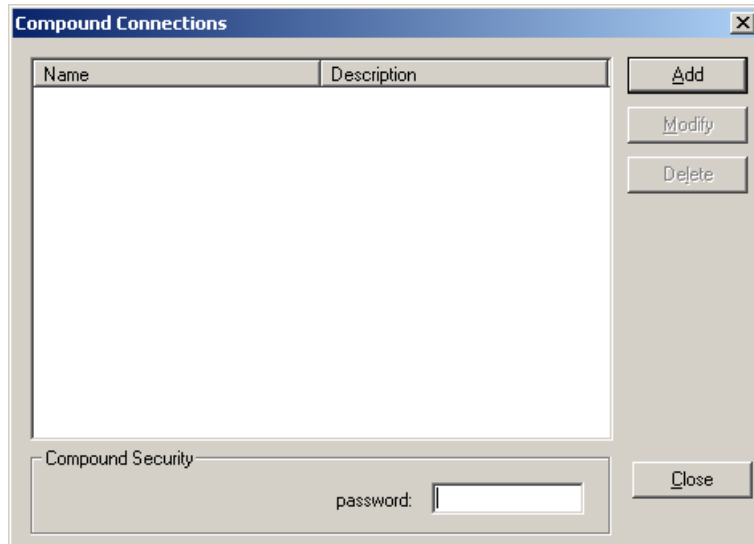
1. Load the instrument database in ViZapp.
2. Select the loop compound you want to set the password to and double-click on it or right-click and select **Properties** to open the Properties window.



3. The Properties Window is shown below:

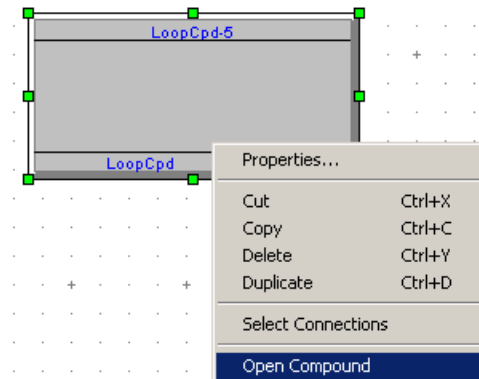


4. Click on the **Advanced** button on this window.

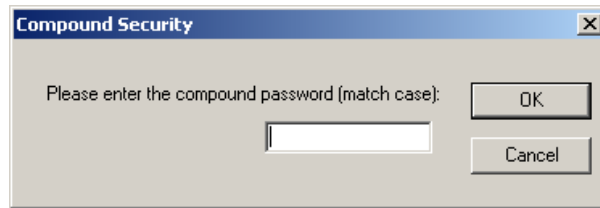


5. Click in the password field and type your password. The password is case-sensitive.
6. Click on the **Close** button.
7. Click on the **OK** button on the Properties Window.
8. Compile your database and save the file.
9. Download the database to the controller.

To open the loop compound:



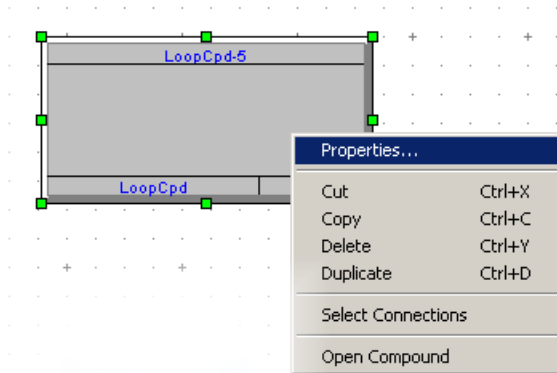
1. Click once on the password protected loop compound and right click on it to select **Open Compound** from the menu.



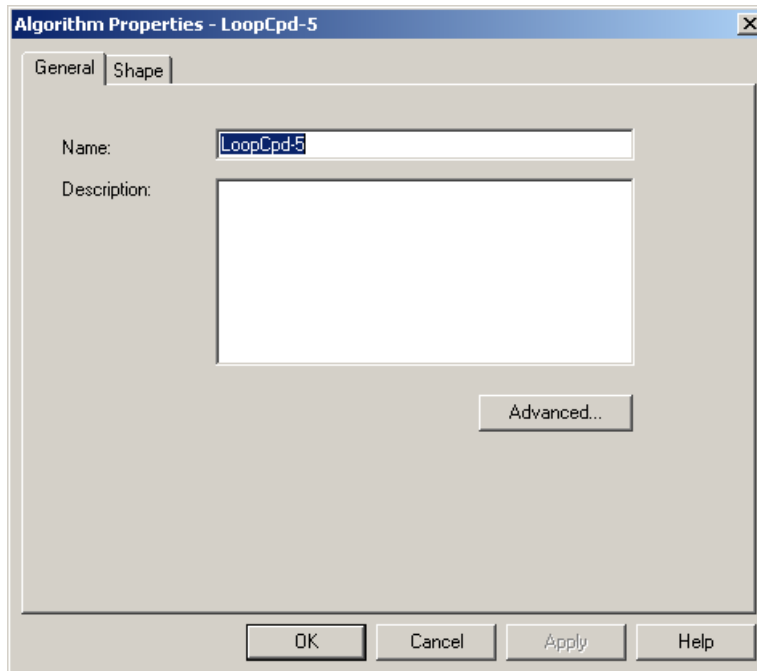
2. Enter the password in the dialog box when prompted as shown in the following figure:
3. Click on the **OK** button.

To clear the password:

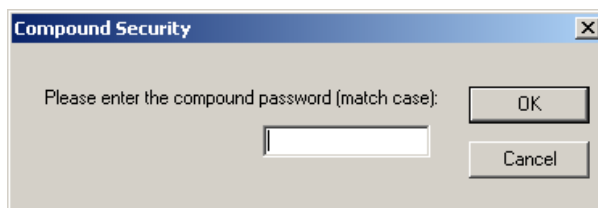
1. Click on the password protected loop compound and double-click on it or right-click on it and then select Properties to pen the Properties window as shown in the figure.



2. The Properties Window is shown below:

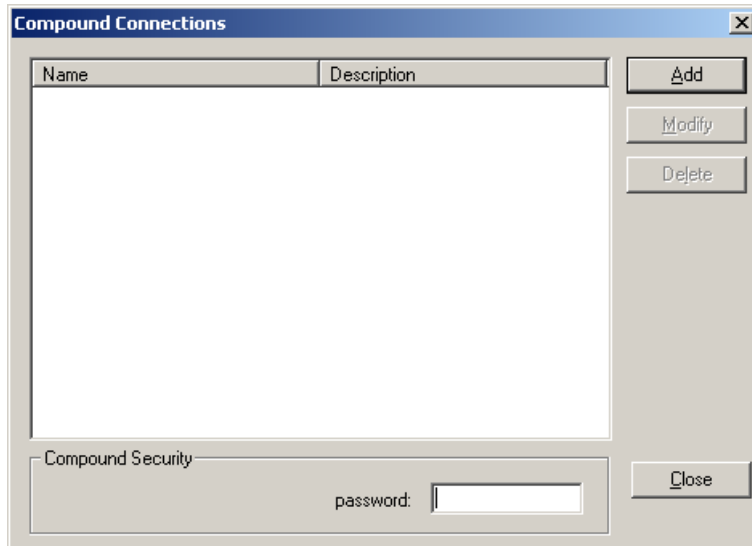


3. Click on the **Advanced** button on this window.



4. Type your password and then click on **OK**.

- The current password will appear in the password field. Clear the password and then click on the Close button.



- Click on the **OK** button on the Properties Window.
- Compile your database and save the file.



The passwords are case sensitive.



There is no factory password or backdoor passwords. The compiled database (.id1 file) does not have the password information. So if you lost your password, the only way to reset is to import the .id1 file or upload the database from the controller provided you had downloaded to it before. You can do this by selecting the Import menu from the ViZapp Menu bar and then by selecting the .id1 file. Note that the imported database function block diagram does not have the tag and the description for the function blocks and any visual changes or graphics you had in your original database.

Technical Notice

Notes: