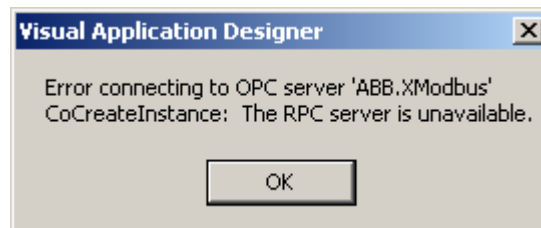


Error connecting to OPC Server

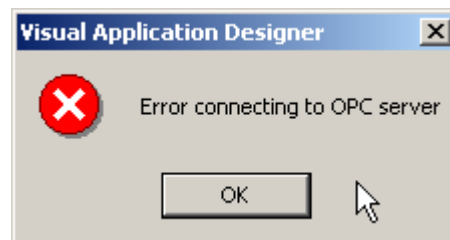
Communication problem in ViZapp connecting to OPC Server

Problem Description:

When you move your configuration files from one computer to another and then try to communicate with the MOD 30ML or Modcell controller for downloading, uploading, debug mode or status page, you would typically get an error message as shown below:



If you clicked on the OK button on this error message box, the following message will be displayed:



Click on OK.

Applies to:

ViZapp, Extended Modbus (Xmodbus) and ICN OPC Servers.

Explanation:

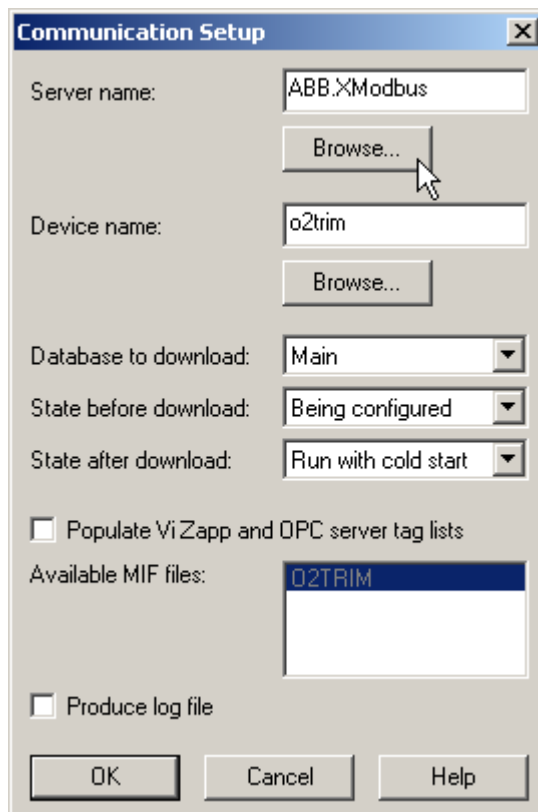
ViZapp uses the OPC Server (Xmodbus or ICN) to communicate with the MOD 30ML and the Modcell controllers. The OPC Servers are DCOM enabled applications. This error occurs due to the following reason: If you successfully download a database file (.afbd) using ViZapp file from a computer, the computer's network identification (node name) and the OPC Server names from that computer are saved in the .afbd file. You could copy the OPC Server file (.MOPC or .ICNS) to your computer or create a new one and add devices to it.

Solution:

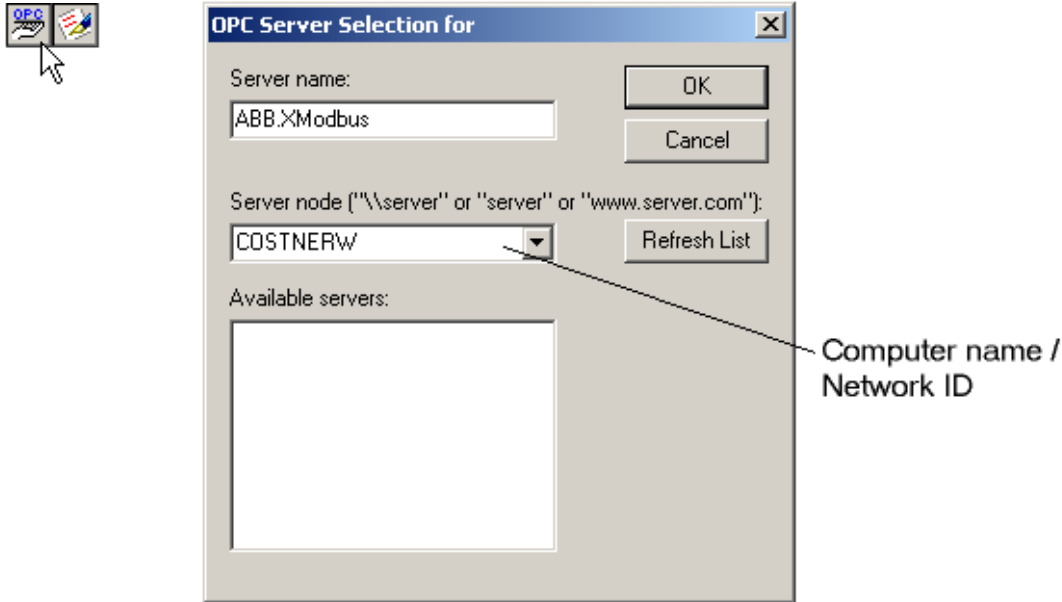
This technote is written around a Windows 2000 System. The procedure is similar for other Windows systems such as Windows 9X or Windows NT or XP.

The solution to this problem is to make the ViZapp go through the OPC Server installed in your computer.

1. Launch ViZapp. Open the workspace, Project and the Instrument document (instrument database or configuration). If you want to download or read the status or upload, select **Instrument-Download** or **Instrument-Status** or **Instrument-Upload** to launch the **Communication Setup** dialog box as shown in the next figure:

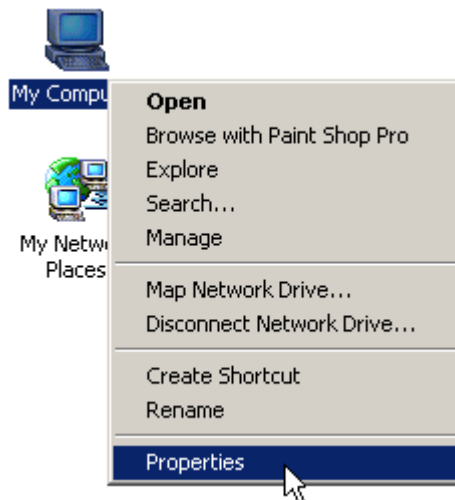


Click on the **Browse** button near the **Server Name** field. This will launch the **OPC Server Selection** dialog box as shown in the next figure.

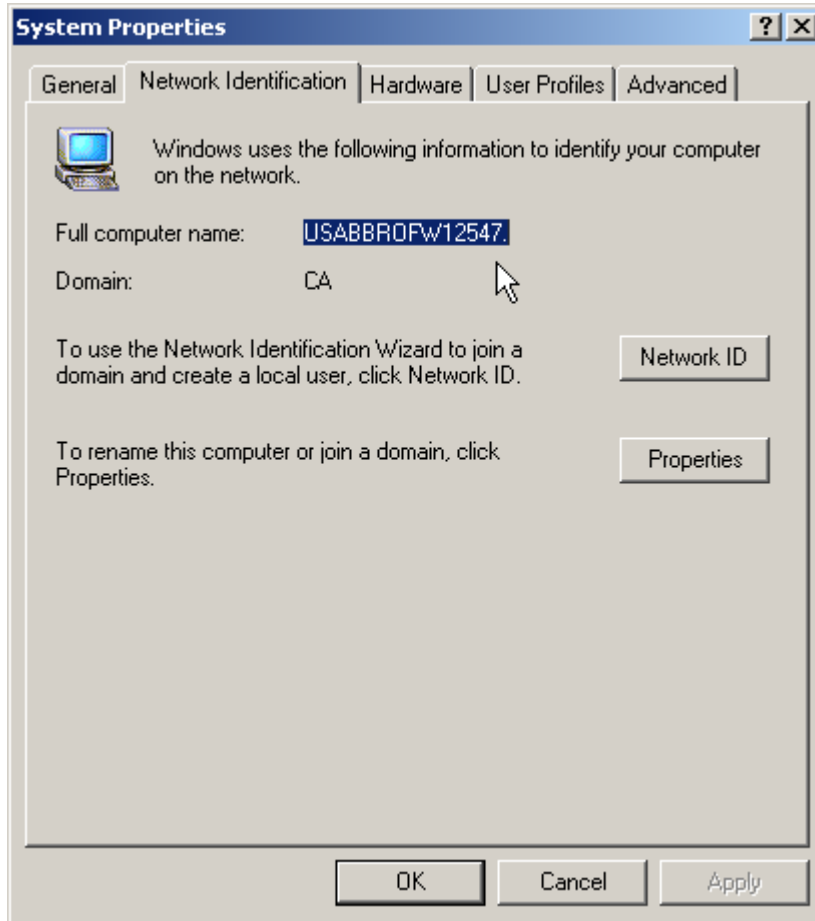


Note: You could also launch this dialog box by clicking on the **OPC** button on the toolbar at the top.

2. Look at the Server Node field. This should match your computer's node name or the network id.
3. To find out your computer's node name, select the **My Computer** icon on the Windows desktop and then right-click on it as shown in the figure above. The **System Properties** dialog box will be

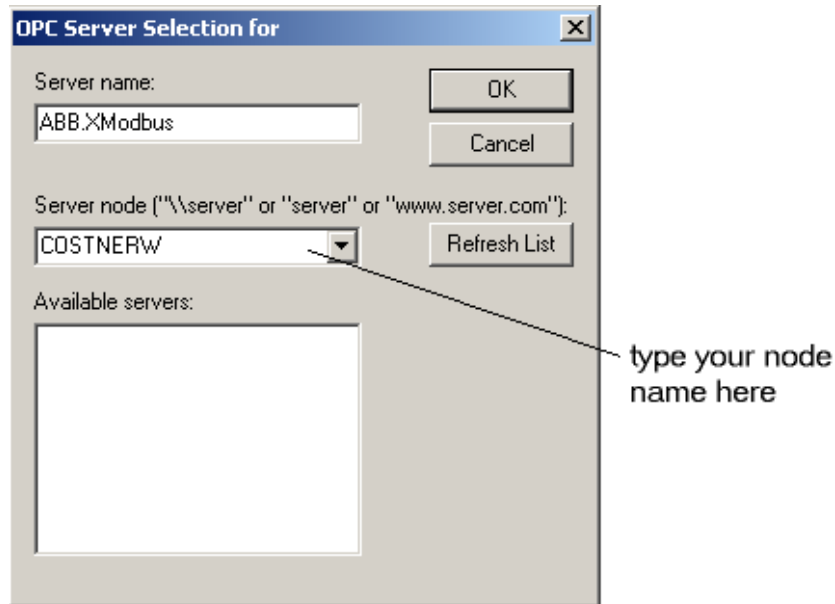


displayed as shown in the next figure. Select the **Network Identification** tab.



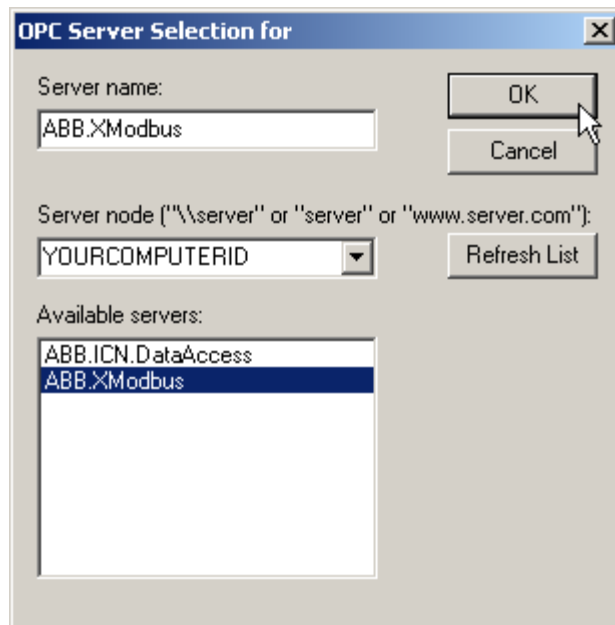
The text that shows up as the **Full Computer Name** is your computer's node name (for example: YOURCOMPUTERID). Make a note of this name or copy this name.

4. Go back to ViZapp. Select the OPC button on the tool bar again. The **OPC Server Selection for** dialog will be displayed. Click on the **Sever Node** field and type your computer's id there. See the next figure.



Click on OK. Wait for a few seconds.

Click on the **OPC** button from the tool bar again.



5. The **OPC Server Selection for** dialog will be displayed again with your computer node name in the **Server Node** field as shown above. It should also populate the **Available Servers** area with the OPC Servers that are installed in your computer.
6. Select the OPC Server (MMA.Xmodbus or MMA.ICN.DataAccess) and then click on the OK button. This should select the OPC Server and display the name of it in the Server Name field in the

Technical Notice

Communication Setup field. Click on the Browse button near the Device name field to launch the selected OPC Server and select the device you want to communicate with.

Note:

For further help on configuring and communication, refer to the ViZapp training manual on the ViZapp cd. You could also download it from our support website <http://www.rcsupport.com>.