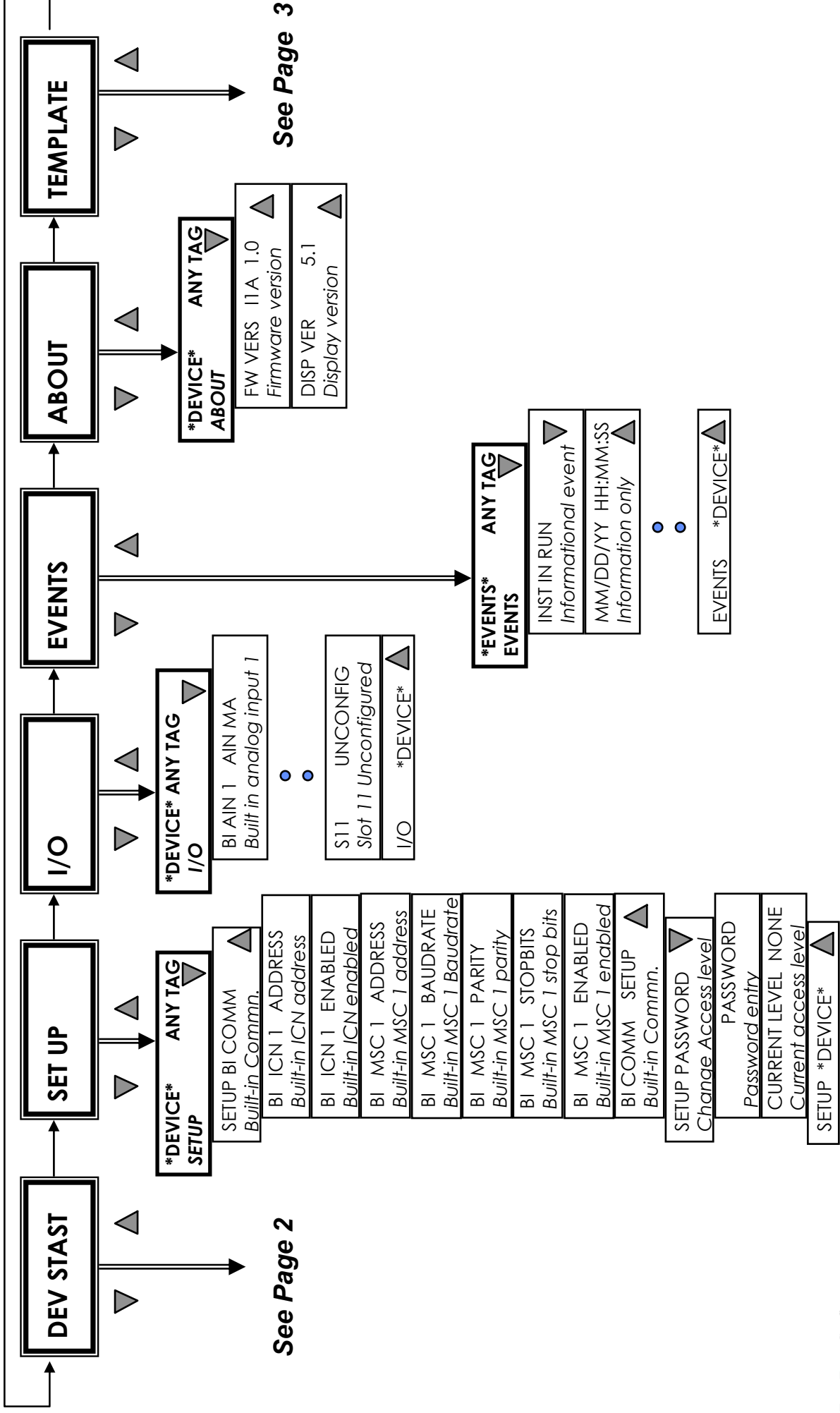


Front Face Configuration Map

Touring The MOD 30ML Front Face Configuration Menus

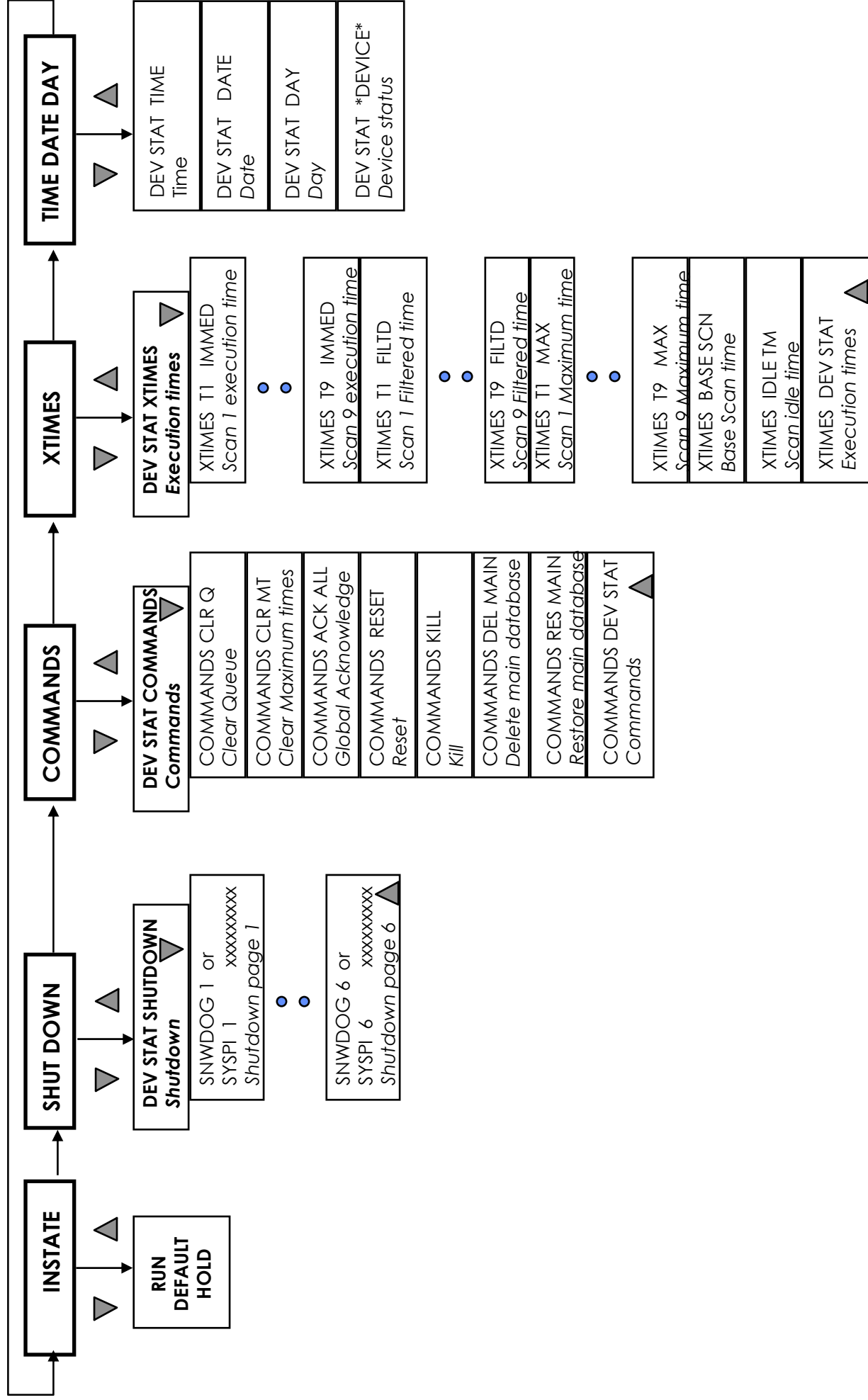
This Page Left Intentionally Blank

NEXT



This Page Left Intentionally Blank

NEXT



This Page Left Intentionally Blank

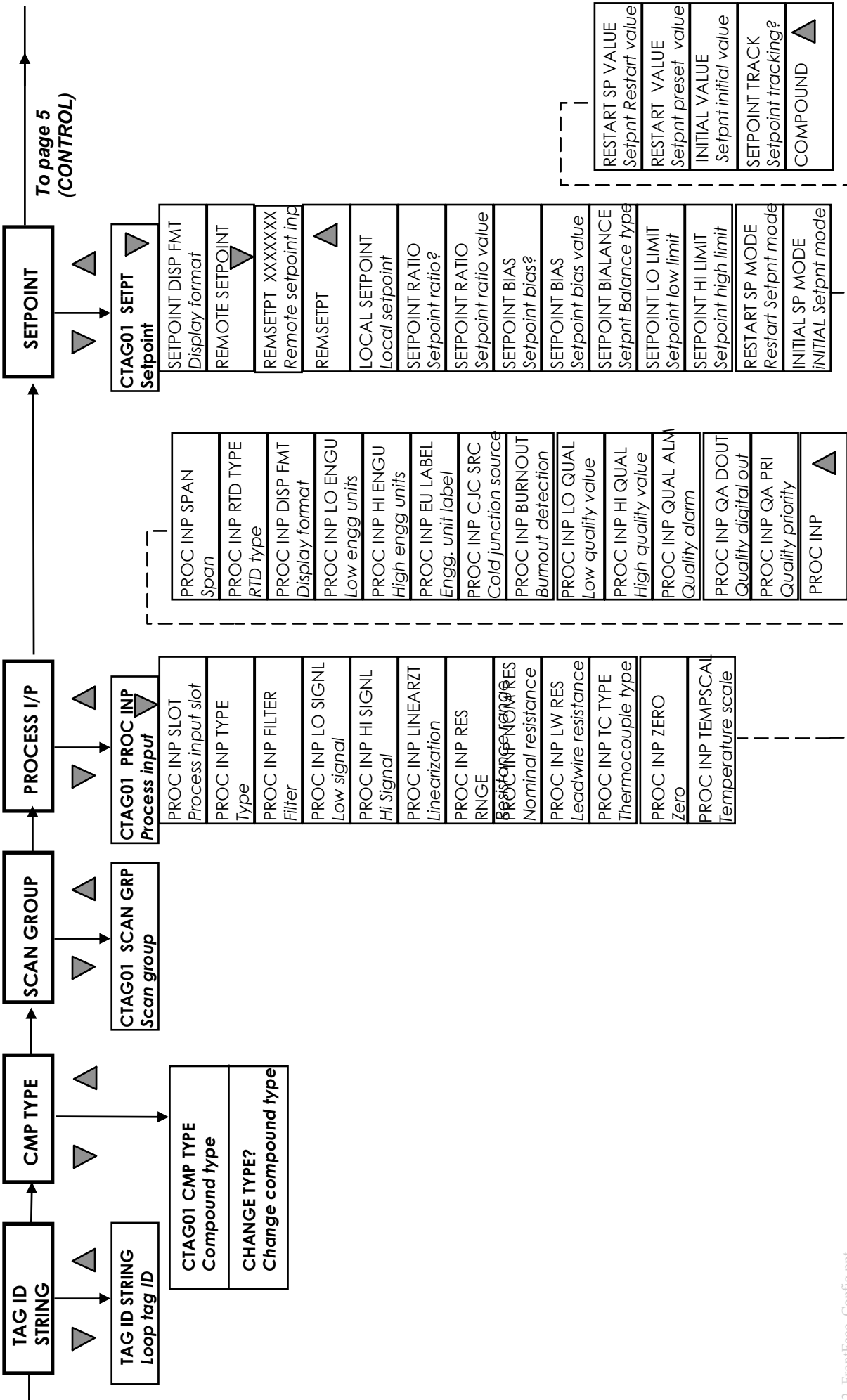
This Page Left Intentionally Blank

From page 3 (EDIT user compound)

From page 5 (Alarms)

NEXT

To page 5 (CONTROL)



TAG ID STRING

TAG ID STRING	Loop tag ID
---------------	-------------

SCAN GROUP

CTAG01 SCAN GRP	Scan group
CTAG01 CMP TYPE	Compound type
CHANGE TYPE?	Change compound type

PROCESS I/P

CTAG01 PROC INP	Process input
-----------------	---------------

PROC INP SLOT	Process input slot
PROC INP TYPE	Type
PROC INP FILTER	Filter
PROC INP LO SIGNAL	Low signal
PROC INP HI SIGNAL	Hi signal
PROC INP LINEARZT	Linearization
PROC INP RES	RNGE
PROC INP RES	RESISTANCE
PROC INP RES	Nominal resistance
PROC INP LW RES	Leadwire resistance
PROC INP TC TYPE	Thermocouple type
PROC INP ZERO	Zero
PROC INP TEMPSCALE	Temperature scale

PROC INP SPAN	Span
PROC INP RTD TYPE	RTD type
PROC INP DISP FMT	Display format
PROC INP LO ENGU	Low engg units
PROC INP HI ENGU	High engg units
PROC INP EU LABEL	Engg. unit label
PROC INP CJC SRC	Cold junction source
PROC INP BURNOUT	Burnout deflection
PROC INP LO QUAL	Low quality value
PROC INP HI QUAL	High quality value
PROC INP QUAL ALM	Quality alarm
PROC INP GA DOUT	Quality digital out
PROC INP GA PRI	Quality priority
PROC INP	PROC INP

SETPOINT

CTAG01 SEIPT	Setpoint
SETPOINT DISP FMT	Display format
REMOTE SETPOINT	Remote setpoint
REMSEIPT XXXXXX	Remote setpoint inp
REMSEIPT	Remote setpoint
LOCAL SETPOINT	Local setpoint
SETPOINT RATIO	Setpoint ratio
SETPOINT RATIO	Setpoint ratio value
SETPOINT BIAS	Setpoint bias?
SETPOINT BIAS	Setpoint bias value
SETPOINT BALANCE	Setpoint Balance type
SETPOINT LO LIMIT	Setpoint low limit
SETPOINT HI LIMIT	Setpoint high limit
RESTART SP MODE	Restart Setpnt mode
INITIAL SP MODE	INITIAL Setpnt mode

RESTART SP VALUE	Setpnt Restart value
RESTART VALUE	Setpnt preset value
INITIAL VALUE	Setpnt initial value
SETPOINT TRACK	Setpoint tracking?
COMPOUND	COMPOUND

This Page Left Intentionally Blank

From page 4
(SETPOINT)

